



Packaging: Simply Redefined

OFFICE USE ONLY

Quality product packaging is all about boosting sales and creating a recognizable brand. A product and its packaging only have 10 seconds to make an impact and create solid brand retention. That's why we need to ensure that any packaging we create offers brand consistency, striking creative and most importantly, effortless usage and a customized fit. From labels to folding cartons, we can make sure no package gets left behind!

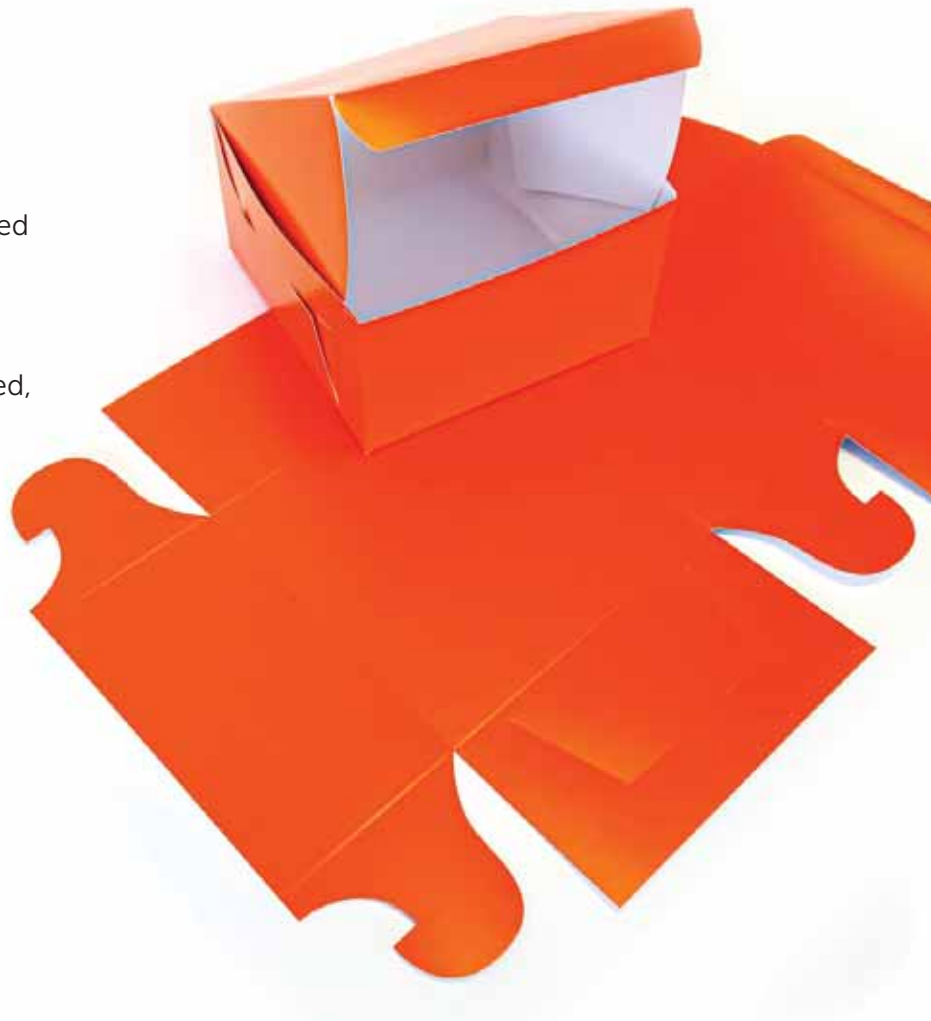
Burke is your media: simply redefined.

FOLDING CARTONS

Our best chance at success and winning a job is if we can keep production in-house. With our equipment and expertise, our strongest solutions are folding cartons for Retail, Consumer and Product Packaging. This guide will help show you the styles of cartons we can currently offer along with some rough price points and a guide to submitting an estimate.

WHAT ARE FOLDING CARTONS?

A Folding carton refers to a non-corrugated box that is made of paperboard. Folding cartons that use paper board are easily printed for full brand exposure. They are typically shipped flat and when constructed, they create a container to protect and/or display products.



PACKAGING TO BE CAUTIOUS OF

There are certain types of packaging that require full outside service, and are not the best fit currently. This includes:

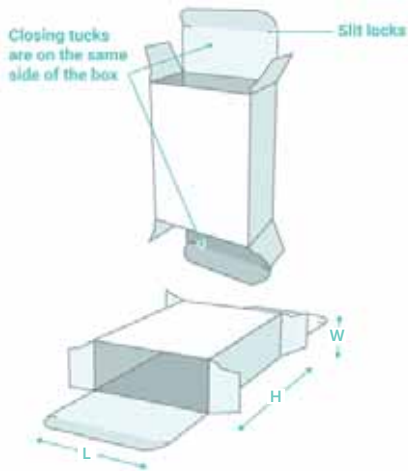
- Food Safe
- Beverages
- Shipping Boxes
- Rigid / Corrugated

BOX STYLES

There are many different styles of packages and how they close. The more we can identify what solution best fits a client's needs, the better our chance of success. Below is a list of popular closing styles and what they look like.

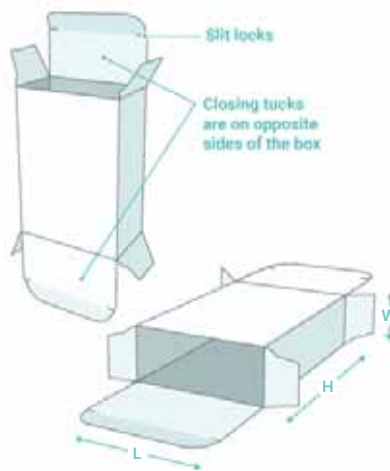
Straight Tuck

Ideal for light weight medium weight



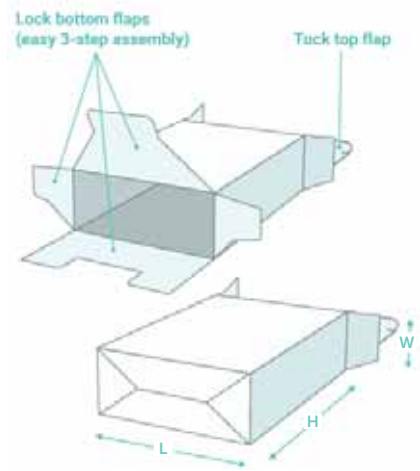
Reverse Tuck

Ideal for light weight medium weight



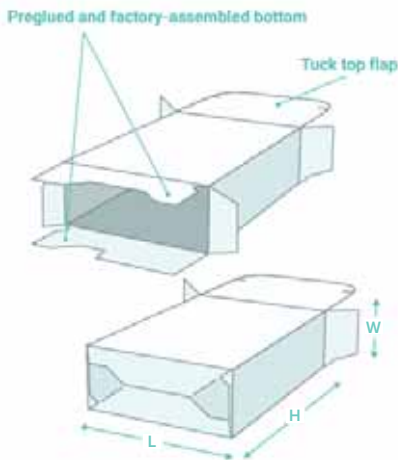
Lock Bottom

Ideal for heavier products



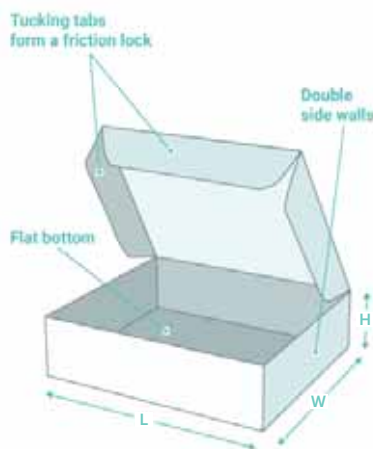
Crash Bottom

Pre-glued bottom for extra strength



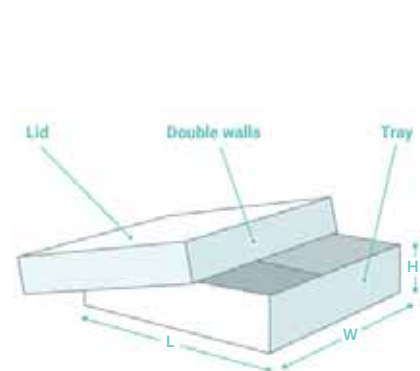
One-piece Tuck Top

Displaying multiple items in same box



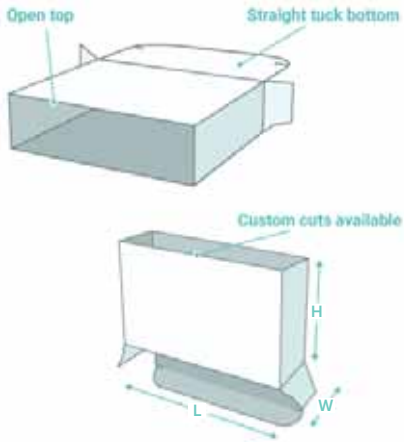
Two-Piece

Tray and lid can be used in a display



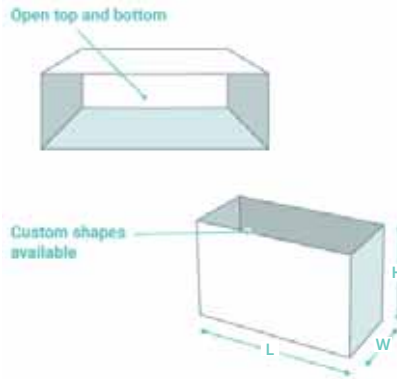
Holster Boxes

Displays part of product



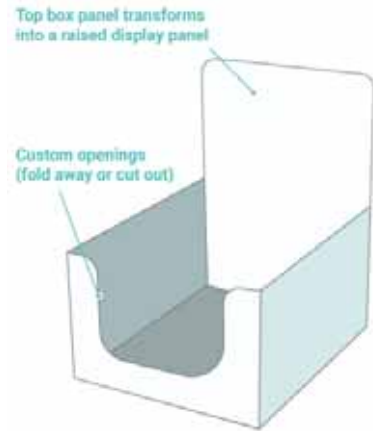
Sleeve Packaging

For customizing a blank box



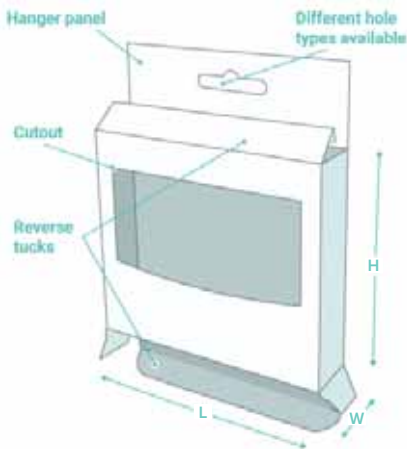
Counter Display

Displaying product on a counter



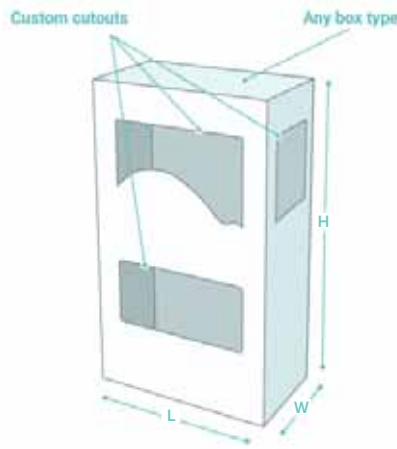
Hanger Box

Ideal for light weight products



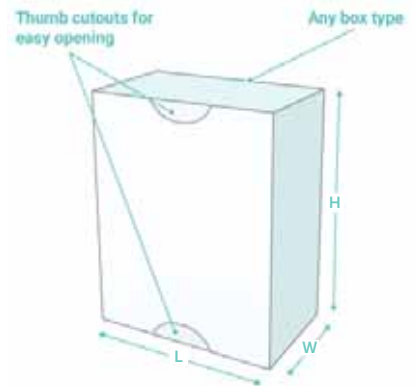
Custom Cutouts

Work with any product or industry



Thumb Tabs

Facilitate and easy opening



MARGARITA KITS



BESPOKE PROJECTS

Quantity: 3,000 (3 Different)

Flat Size: 27.85" x 21.125"

Finished Size: 9.5" L x 5.5" W x 3.25" H 5.5" L x 3.25" W x 9.5" H

Box Style: One Piece Tuck

Stock: 24pt C1S Cover SBS

Colour: CMYK 4/0

Finishing: Matte laminate 1.3 mil - 1 side only

STAIN REMOVER 30 PACK



ALL CLEAN NATURAL

- Quantity:** 25,000
- Flat Size:** 18.375" x 13.75"
- Finished Size:** 6" L x 2.75" W x 6.25" H
- Box Style:** Reverse Tuck
- Stock:** 18pt C1S Cover SBS
- Colour:** CMYK 4/0
- Finishing:** Gloss AQ

FACE MASK BOX



VALUESOFT TEXTILES

- Quantity:** 10,000
- Flat Size:** 24.125" x 11.375"
- Finished Size:** 7.75" L x 3.875" W x 3.875" H
- Box Style:** Lock Bottom, Tuck Top
- Stock:** 18pt C1S Cover SBS
- Colour:** CMYK 4/0
- Finishing:** Gloss AQ

MASHED POTATO SLEEVES



CANYON CREEK FOOD COMPANY

- Quantity:** 24,500
- Flat Size:** 16.19" x 8.8125"
- Finished Size:** 8.75" L x 6.75" W x 1.5" H
- Box Style:** Sleeve
- Stock:** 18pt C1S Cover SBS
- Colour:** CMYK 4/0
- Finishing:** Gloss AQ

KETO SMALL BOXES



ALL CLEAN NATURAL

Quantity: 30,000 (3 Different)

Flat Size: 12.875" x 14"

Finished Size: 8" L x 4" W x 2" H

Box Style: Reverse Tuck

Stock: 18pt C1S Cover SBS

Colour: CMYK 4/0

Finishing: Gloss AQ

COVID SURE STRIPS TEST BOX



ALL CLEAN NATURAL

- Quantity:** 50,000
- Flat Size:** 8" x 12.75"
- Finished Size:** 8.5" L x 2.5" W x 1.125" H
- Box Style:** Reverse Tuck
- Stock:** 18pt C1S Cover SBS
- Colour:** CMYK 4/0
- Finishing:** Gloss AQ

WELCOME BOXES



UNIVERSITY OF CALGARY

Quantity:	500
Flat Size:	21.25" x 28.5"
Finished Size:	9" L x 7" W x 3.5" H
Box Style:	One Piece Tuck
Stock:	24pt C1S Cover SBS
Colour:	CMYK 4/0
Finishing:	AQ

THRONE 4 PACK



ALL CLEAN NATURAL

Quantity:	3,000
Flat Size:	20.25" x 27"
Finished Size:	8.5" L x 4.5" W x 9" H
Box Style:	Straight Tuck
Stock:	18pt C1S Cover SBS
Colour:	CMYK 4/0
Finishing:	Gloss AQ

SPRAY BOTTLES



ALL CLEAN NATURAL

- Quantity:** 5,000
- Flat Size:** 13.375" x 9.75
- Finished Size:** 5" L x 1.5" W x 5.5" H
- Box Style:** Reverse Tuck with Custom Cuts
- Stock:** 18pt C1S Cover SBS
- Colour:** PMS 3/0: 408, 410 & 871
- Finishing:** Gloss AQ

BRAIN BOOSTER CARDS & BOX



HULL SERVICES

Quantity: 500

Flat Size: Top = 4.323" X 8.875" Bottom = 9.698" X 14.12"

Finished Size: 6" L x 1.75" W x 4" H

Box Style: 2 Piece

Stock: 24pt C1S Cover SBS

Colour: CMYK 4/0

Finishing: Satin AQ

GOLD BOX - SUNGLASSES MAILER



HH GLOBAL

- Quantity:** 1,000
- Flat Size:** 15.1" x 23.375"
- Finished Size:** 10" L x 5" W x 0.75" H
- Box Style:** One-piece Tuck Top
- Stock:** 15pt C1S Cover SBS
- Colour:** 5/0 CMYK + PMS 10120
- Finishing:** Spot Metallic UV Gloss Varnish

CARD SET AND BOX



SUNNY LEMONDROP

- Quantity:** 1,200
- Flat Size:** 11" x 13.181"
- Finished Size:** 7.25" L x 5.25" W x 1" H
- Box Style:** One-piece Tuck Top
- Stock:** 18pt C1S Cover SBS
- Colour:** CMYK 4/0

PACKAGING QUOTE GUIDELINES

HERE IS A CHECKLIST OF INFORMATION WE NEED TO PROPERLY ESTIMATE:

Style of Package

- Straight Tuck
- Reverse Tuck
- Lock Bottom
- Crash Bottom
- One-piece Tuck
- Two-Piece
- Holster Boxes
- Sleeve Packaging
- Counter Display
- Hanger Box
- Custom Cutouts
- Thumb Tabs

Usage Details

Description of contents: _____

Weight of the contents: _____

Measurement of the contents: _____

Quantity of product inside each box: _____

Custom Packages

If a box isn't one of the standard samples, we require a physical sample in order to deconstruct and determine how it is built. Pictures are not enough.

Dieline

- Existing
- Design/Creation Required

Stock Recommendations (typically C1S Coated 1 Side)

- 12 PT
- 15 PT
- 18 PT
- 24 PT
- SBS: White / White - Solid Bleached Sulfate
- CUK White / Kraft - Coated Unbleached Kraft

Measurements always L X W X H (Length x Width x Height) See Page 4

Flat Size: _____ Folded Size: _____



burkegroup.ca